

ST. EUSTATIUS

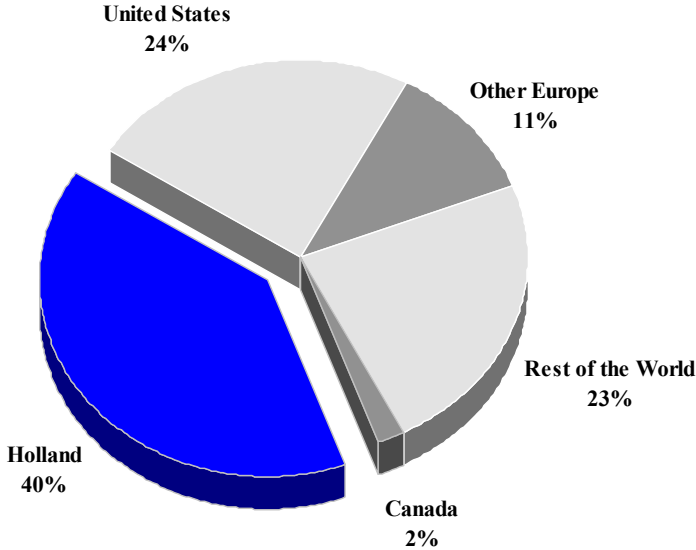
TOURISM HIGHLIGHTS FOR 2007

| VISITOR ARRIVALS | | | |
|--|--------------------------|--|--------------------------------|
| Tourist Arrivals ➔ ➔ <i>Summer</i> * ➔ <i>Winter</i> * | 11,568 67.9% 32.1% | Sea Arrivals ➔ <i>Summer</i> ➔ <i>Winter</i> Yacht Arrivals | 5,858 48.5% 51.5% 707 |
| ACCOMMODATION STATISTICS | | SOCIO-ECONOMIC STATISTICS | |
| Rooms ^{viii} | 62 | Land Area (<i>square Kilometres</i>) Population (<i>thousand mid year 2006</i>) | 21 2.6 |

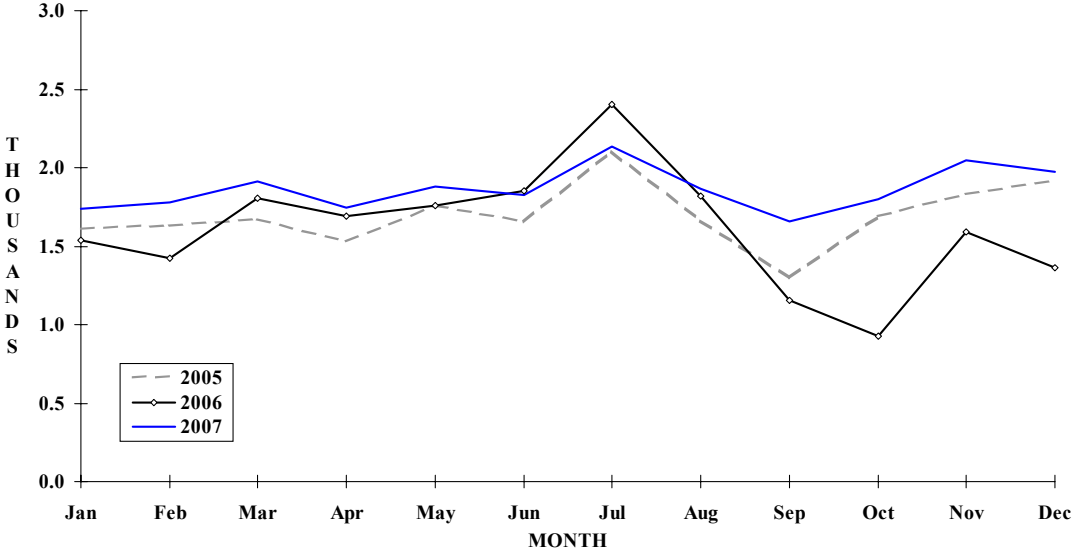
** Based on Total Air Arrivals*

ST EUSTATIUS

**TOURIST ARRIVALS BY MAIN MARKETS
2007**



MONTHLY VISITOR ARRIVALS



* Total Visitor Arrivals includes Antilleans

ST EUSTATIUS

VISITOR AIR ARRIVALS BY NATIONALITY*

| Nationality | 2003 | 2004 | 2005 | 2006 | % Share | |
|---------------------------|--------------|--------------|--------------|--------------|--------------|--------------|
| | | | | | 2007 | 2007 |
| United States | 2378 | 2463 | 2309 | 2206 | 2738 | 23.7 |
| Canada | 184 | 211 | 194 | 138 | 229 | 2.0 |
| Holland | 3930 | 4009 | 3904 | 3630 | 4594 | 39.7 |
| Other Europe | 1337 | 1516 | 1496 | 1222 | 1299 | 11.2 |
| Rest of the World | 2617 | 2877 | 2452 | 2389 | 2708 | 23.4 |
| TOTAL TOURISTS | 10446 | 11076 | 10355 | 9585 | 11568 | 100.0 |
| Antillean ** | 9795 | 10121 | 10001 | 9735 | 10784 | |
| TOTAL AIR VISITORS | 20241 | 21197 | 20356 | 19320 | 22352 | |

*Includes same-day visitors and returning residents

**Includes residents of St Eustatius

MONTHLY VISITOR AIR ARRIVALS

| Month | 2003 | 2004 | 2005 | 2006 | % Change | |
|--------------|--------------|--------------|--------------|--------------|--------------|-------------|
| | | | | | 2007 | 2007/06 |
| January | 1565 | 1659 | 1609 | 1536 | 1736 | 13.0 |
| February | 1440 | 1560 | 1628 | 1422 | 1776 | 24.9 |
| March | 1513 | 1645 | 1672 | 1803 | 1912 | 6.0 |
| April | 1502 | 1740 | 1527 | 1693 | 1743 | 3.0 |
| May | 1746 | 1729 | 1756 | 1756 | 1879 | 7.0 |
| June | 1887 | 1770 | 1655 | 1855 | 1827 | -1.5 |
| July | 2263 | 2410 | 2106 | 2401 | 2133 | -11.2 |
| August | 1563 | 1917 | 1667 | 1817 | 1864 | 2.6 |
| September | 1417 | 1374 | 1302 | 1154 | 1659 | 43.8 |
| October | 1709 | 1728 | 1688 | 927 | 1800 | 94.2 |
| November | 1656 | 1738 | 1829 | 1592 | 2049 | 28.7 |
| December | 1985 | 1927 | 1917 | 1364 | 1974 | 44.7 |
| TOTAL | 20246 | 21197 | 20356 | 19320 | 22352 | 15.7 |

ST EUSTATIUS

MONTHLY VISITOR SEA ARRIVALS

| Month | 2003 | 2004 | 2005 | 2006 | 2007 | % Change 2007/06 |
|----------------|-------------|-------------|-------------|--------------|-------------|-----------------------------|
| January | 680 | 553 | 56 | 1827 | 911 | -50.1 |
| February | 1269 | 726 | 1058 | 1652 | 898 | -45.6 |
| March | 948 | 894 | 1414 | 1817 | 578 | -68.2 |
| April | 345 | 744 | 756 | 1962 | 631 | -67.8 |
| May | 239 | 491 | 771 | 1899 | 474 | -75.0 |
| June | 342 | 268 | 526 | 1326 | 598 | -54.9 |
| July | 79 | 354 | 652 | 1685 | 505 | -70.0 |
| August | 200 | 334 | 867 | 1013 | 253 | -75.0 |
| September | 221 | 115 | 790 | 1157 | 161 | -86.1 |
| October | 247 | 134 | 863 | 891 | 115 | -87.1 |
| November | 272 | 409 | 987 | 1145 | 344 | -70.0 |
| December | 506 | 1095 | 1142 | 1879 | 390 | -79.2 |
| TOTAL | 5348 | 6117 | 9882 | 18253 | 5858 | -67.9 |
| Yacht Arrivals | 610 | 708 | 778 | 708 | 708 | |

TOURIST ACCOMMODATION (Rooms)

| Rooms | 2003 | 2004 | 2005 | 2006 | 2007 |
|--------------|-------------|-------------|-------------|-------------|-------------|
| Total | n.a | n.a | n.a | n.a | n.a |

Source: St. Eustatius Development Foundation

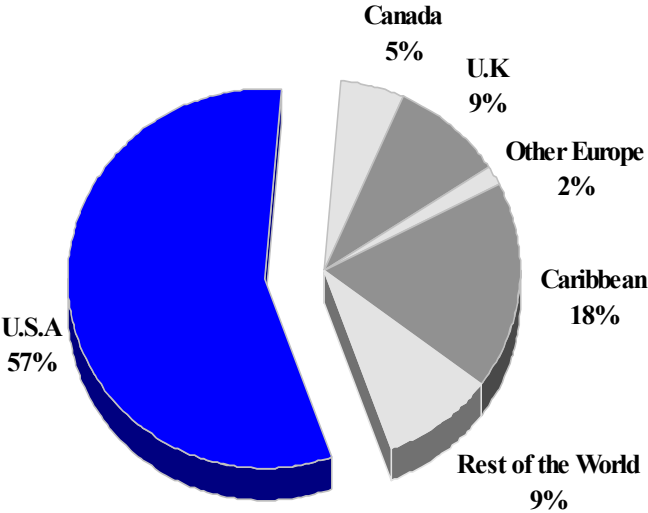
ST KITTS AND NEVIS

TOURISM HIGHLIGHTS FOR 2007

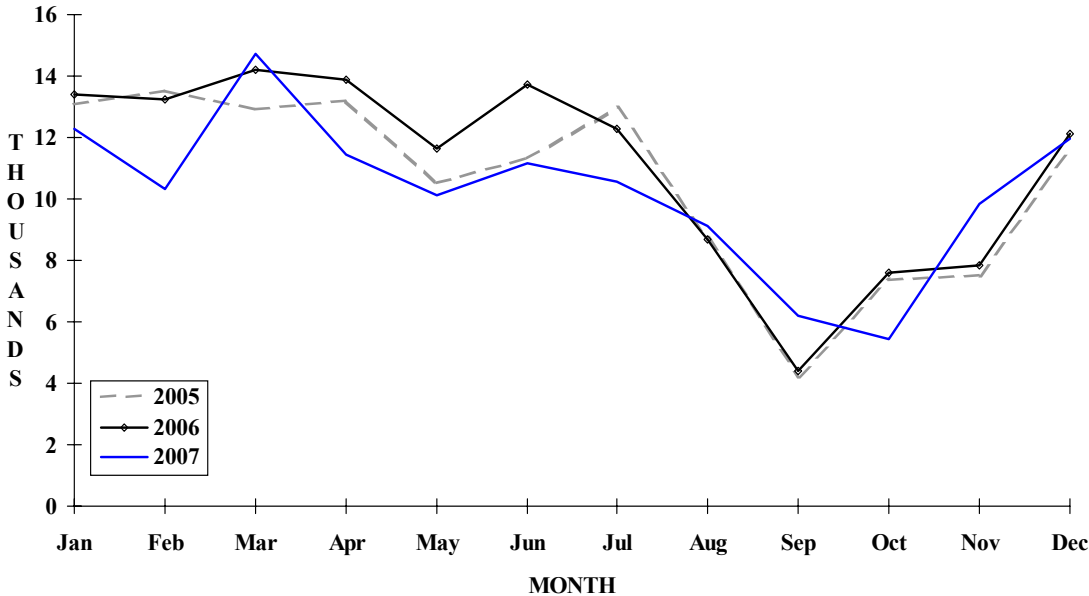
| VISITOR ARRIVALS | | | |
|---|---------|--|---------|
| Tourist Arrivals ➔ | 123,161 | Cruise Passengers | 247,393 |
| ➔ <i>Summer</i> | n.a | ➔ <i>Summer</i> | 60.4% |
| ➔ <i>Winter</i> | n.a | ➔ <i>Winter</i> | 39.6% |
| | | Cruise Ship Calls ^{II} | 281 |
| VISITOR PROFILE | | | |
| Average Length of Stay (<i>nights</i>) ^{IV} | 9.6 | Tourist Arrivals by Place of Stay ^{IV} | |
| Tourist Arrivals by Purpose of Visit ^{IV} | | ➔ <i>Hotels</i> | 49.9% |
| ➔ <i>Holiday</i> | 89.8% | ➔ <i>Apartment/Villas</i> | 4.3% |
| ➔ <i>Business</i> | 9.6% | ➔ <i>Private</i> | 40.9% |
| ➔ <i>Other</i> | 0.6% | ➔ <i>Other</i> | 4.9% |
| TOURISM AND OTHER RELATED ECONOMIC STATISTICS | | | |
| Total Expenditure (<i>US\$ millions</i>) | \$106.9 | GDP at Factor Cost (<i>US\$millions</i>) | \$326.8 |
| Tourism Budget (<i>US\$ 000</i>) ^{IV b} | \$3,238 | Consumer Price Index (<i>%ch. 2004/'03</i>) | 2.3% |
| Hotel and Restaurant contribution to GDP | 8.5% | | |
| ACCOMMODATION STATISTICS | | SOCIO-ECONOMIC STATISTICS | |
| Rooms ^{VI} | 1,754 | Land Area (<i>square Kilometres</i>) | 269 |
| | | Population (<i>thousand mid year 2004</i>) | 47.9 |

ST. KITTS & NEVIS

TOURIST ARRIVALS BY MAIN MARKETS
2004^v



MONTHLY TOURIST ARRIVALS



ST KITTS AND NEVIS

TOURIST ARRIVALS BY COUNTRY OF RESIDENCE

| Country of Residence | 2000 | 2001 | 2002 | 2003 | % Share | |
|----------------------|--------------|--------------|--------------|--------------|--------------|-------|
| | | | | | 2004 | 2004 |
| United States | 23474 | 25558 | 27525 | 34962 | 52341 | 57.0 |
| Canada | 5395 | 5237 | 4352 | 3979 | 4688 | 5.1 |
| United Kingdom | 12841 | 8726 | 5464 | 6776 | 8502 | 9.3 |
| Other Europe | 1543 | 1730 | n.a | 1244 | 1563 | 1.7 |
| OECS | 6244 | 7294 | n.a | 9852 | 10595 | 11.5 |
| Other CARICOM | 5441 | 4569 | n.a | 2395 | 2993 | 3.3 |
| U.S. Virgin Islands | 5862 | 5509 | n.a | n.a | n.a | - |
| Netherlands Antilles | 3721 | 3592 | n.a | 2370 | 2622 | 2.9 |
| Rest of World | 8628 | 8350 | 30190 | 7382 | 8465 | 9.2 |
| TOTAL | 73149 | 70565 | 67531 | 68960 | 91769 | 100.0 |

MONTHLY TOURIST ARRIVALS

| Month | *2003 | 2004 | 2005 | 2006 | %Change | |
|--------------|--------------|---------------|---------------|---------------|---------------|-------------|
| | | | | | 2007 | 2007/06 |
| January | 5526 | 10080 | 13079 | 13417 | 12296 | -8.4 |
| February | 6408 | 13093 | 13528 | 13224 | 10326 | -21.9 |
| March | 7115 | 12385 | 12904 | 14216 | 14710 | 3.5 |
| April | 7528 | 12941 | 13201 | 13874 | 11433 | -17.6 |
| May | 6515 | 9624 | 10506 | 11629 | 10134 | -12.9 |
| June | 9373 | 11809 | 11309 | 13705 | 11162 | -18.6 |
| July | 9569 | 11972 | 12953 | 12275 | 10554 | -14.0 |
| August | 7944 | 6842 | 8716 | 8678 | 9120 | 5.1 |
| September | 4743 | 3856 | 4255 | 4414 | 6189 | 40.2 |
| October | 6073 | 7202 | 7348 | 7582 | 5433 | -28.3 |
| November | 8103 | 7019 | 7514 | 7850 | 9849 | 25.5 |
| December | 11702 | 10815 | 11614 | 12106 | 11955 | -1.2 |
| TOTAL | 90599 | 117638 | 126927 | 132970 | 123161 | -7.4 |

* include same-day visitors

ST KITTS AND NEVIS

CRUISE PASSENGER ARRIVALS*

| Month | 2003 | 2004 | 2005 | 2006 | 2007 | %Change 2004/03 |
|--------------|---------------|---------------|---------------|---------------|---------------|--------------------|
| January | 25392 | 39517 | 33910 | 35989 | 33647 | - |
| February | 19415 | 41646 | 41430 | 36752 | 30994 | - |
| March | 20250 | 35995 | 41384 | 38085 | 39167 | - |
| April | 13517 | 20438 | 23041 | 25594 | 27303 | - |
| May | 557 | 3436 | 1310 | 561 | 3445 | - |
| June | 431 | 5839 | 0 | 63 | 0 | - |
| July | 1313 | 6406 | 217 | 145 | 177 | - |
| August | 0 | 7306 | 2821 | 0 | 0 | - |
| September | 0 | 7739 | 0 | 1930 | 0 | - |
| October | 6029 | 10036 | 3980 | 3207 | 10805 | - |
| November | 25257 | 31728 | 30502 | 25103 | 45657 | - |
| December | 38268 | 44449 | 38237 | 35646 | 56198 | - |
| Total | 150429 | 254535 | 216832 | 203075 | 247393 | - |

| | | | | | |
|------------------------|-----|-----|-----|-----|-----|
| Number of calls | 281 | n.a | n.a | n.a | n.a |
|------------------------|-----|-----|-----|-----|-----|

* Includes arrivals by yacht

TOURIST ACCOMMODATION (Rooms)

| Type of Accommodation | 2000 | 2001 | 2002 | 2003 | 2004 |
|-----------------------|-------------|------------|------------|------------|------------|
| Hotels | n.a | n.a | n.a | n.a | n.a |
| Apts/Cottages | n.a | n.a | n.a | n.a | n.a |
| Guest Houses/Other | n.a | n.a | n.a | n.a | n.a |
| TOTAL | 1754 | n.a | n.a | n.a | n.a |

Source: Statistics Division and Department of Tourism, St Kitts and Nevis

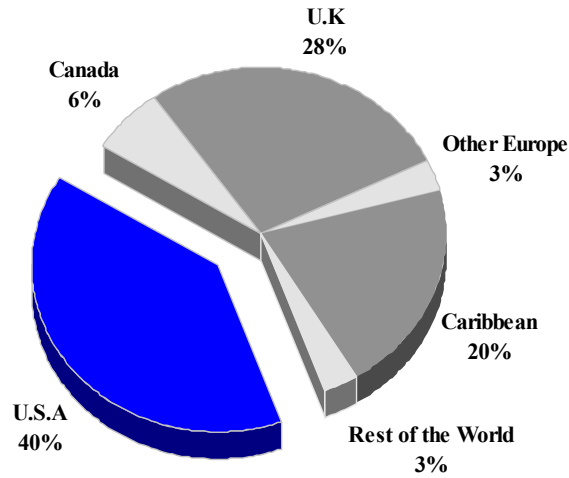
ST. LUCIA

TOURISM HIGHLIGHTS FOR 2007

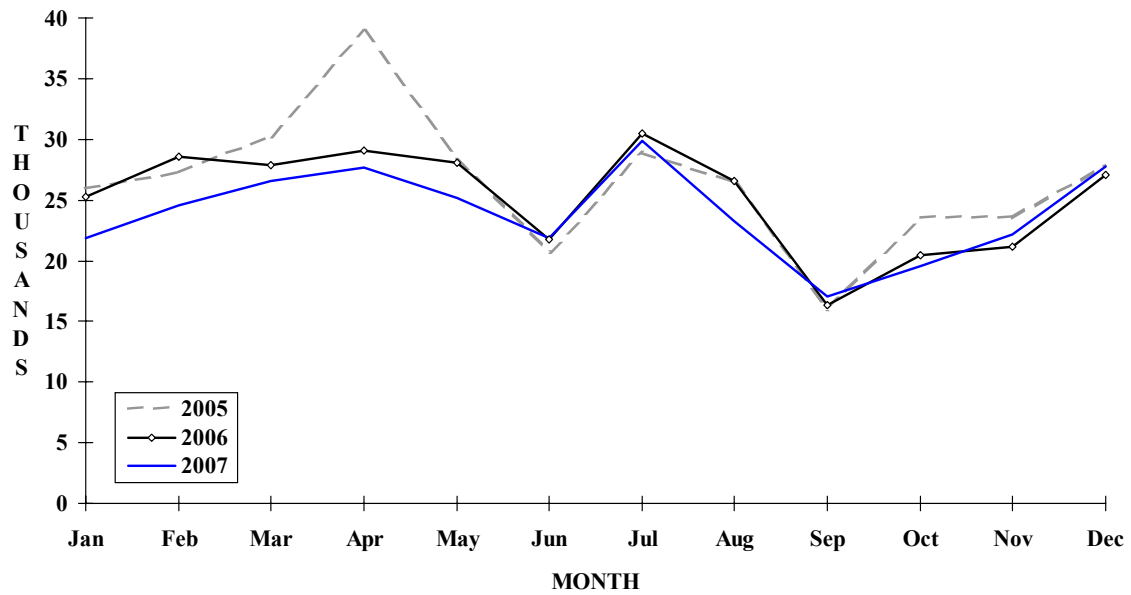
| VISITOR ARRIVALS | | | |
|---|---------|--|---------|
| Tourist Arrivals ➔ | 287,518 | Cruise Passengers | 610,345 |
| ➔ <i>Summer</i> | 64.9% | ➔ <i>Summer</i> | 51.5% |
| ➔ <i>Winter</i> | 35.1% | ➔ <i>Winter</i> | 48.5% |
| Same-day Visitors | 7,777 | Cruise Ship Calls | 314 |
| VISITOR PROFILE | | | |
| Average Length of Stay (nights) | 9.3 | Tourist Arrivals by Place of Stay | |
| Tourist Arrivals by Purpose of Visit | | ➔ <i>Hotels</i> | 70.3% |
| ➔ <i>Holiday</i> | 84.7% | ➔ <i>Guest Houses/Apartments</i> | 1.7% |
| ➔ <i>Business</i> | 3.7% | ➔ <i>Private</i> | 10.4% |
| ➔ <i>Other</i> | 11.6% | ➔ <i>Other</i> | 17.6% |
| TOURISM AND OTHER RELATED ECONOMIC STATISTICS | | | |
| Total Expenditure (US\$ millions) ^I | \$284.6 | GDP at Factor Cost (US\$ millions) ^{III} | \$635.7 |
| Tourism Budget (US\$ thousands) ^{IX b} | \$6,918 | Hotel and Restaurant contribution to GDP ^{IV} | 13.6% |
| | | Consumer Price Index (% ch. 2004/'03) | 1.5% |
| ACCOMMODATION STATISTICS | | SOCIO-ECONOMIC STATISTICS | |
| Rooms | 4,889 | Land Area (square Kilometres) | 616 |
| Room Occupancy Rates | 64.9% | Population (thousand mid year 2006) | 166.8 |

ST. LUCIA

**TOURIST ARRIVALS BY MAIN MARKETS
2007**



MONTHLY TOURIST ARRIVALS



TOURIST ARRIVALS BY COUNTRY OF RESIDENCE

| Country of Residence | 2003 | 2004 | 2005 | 2006 | 2007 | % Share 2007 |
|----------------------|---------------|---------------|---------------|---------------|---------------|-----------------|
| United States | 98078 | 107089 | 112557 | 117450 | 113433 | 39.5 |
| Canada | 13494 | 15315 | 16506 | 17491 | 18640 | 6.5 |
| United Kingdom | 75426 | 81370 | 84725 | 73312 | 79180 | 27.5 |
| Germany | 3582 | 3289 | 3318 | 2569 | 1592 | 0.6 |
| Other Europe | 11185 | 13203 | 12343 | 9684 | 7056 | 2.5 |
| Caribbean | 70543 | 74242 | 84729 | 78464 | 58917 | 20.5 |
| Rest of World | 4640 | 3923 | 3761 | 3540 | 8700 | 3.0 |
| TOTAL | 276948 | 298431 | 317939 | 302510 | 287518 | 100.0 |

MONTHLY TOURIST ARRIVALS

| Month | 2003 | 2004 | 2005 | 2006 | 2007 | %Change 2007/06 |
|--------------|---------------|---------------|---------------|---------------|---------------|--------------------|
| January | 24930 | 21532 | 25997 | 25215 | 21887 | -13.2 |
| February | 21875 | 25766 | 27229 | 28619 | 24610 | -14.0 |
| March | 23387 | 24977 | 30320 | 27832 | 26573 | -4.5 |
| April | 27993 | 30131 | 38901 | 29024 | 27716 | -4.5 |
| May | 25372 | 26196 | 28469 | 28055 | 25212 | -10.1 |
| June | 22504 | 21991 | 20753 | 21760 | 21823 | 0.3 |
| July | 26228 | 29926 | 28839 | 30453 | 29825 | -2.1 |
| August | 24632 | 28079 | 26474 | 26538 | 23249 | -12.4 |
| September | 17392 | 17748 | 16016 | 16347 | 17064 | 4.4 |
| October | 19448 | 22065 | 23511 | 20453 | 19598 | -4.2 |
| November | 20665 | 23214 | 23538 | 21153 | 22163 | 4.8 |
| December | 22522 | 26806 | 27892 | 27061 | 27798 | 2.7 |
| TOTAL | 276948 | 298431 | 317939 | 302510 | 287518 | -5.0 |

CRUISE PASSENGER ARRIVALS

| Month | 2003 | 2004 | 2005 | 2006 | 2007 | % Change 2007/06 |
|--------------|---------------|---------------|---------------|---------------|---------------|-----------------------------|
| January | 53410 | 65462 | 68510 | 54532 | 81536 | 49.5 |
| February | 48736 | 59660 | 50938 | 51877 | 79152 | 52.6 |
| March | 52224 | 67887 | 60392 | 59119 | 77679 | 31.4 |
| April | 44738 | 55354 | 49343 | 39384 | 57864 | 46.9 |
| May | 13073 | 18456 | 8253 | 5432 | 24336 | 348.0 |
| June | 6786 | 17667 | 10264 | 11069 | 19538 | 76.5 |
| July | 6756 | 15099 | 7099 | 10410 | 20024 | 92.4 |
| August | 6790 | 14574 | 7050 | 7000 | 26555 | 279.4 |
| September | 8184 | 20777 | 10200 | 10735 | 18940 | 76.4 |
| October | 25962 | 18376 | 10820 | 11187 | 29332 | 162.2 |
| November | 54666 | 54618 | 53699 | 40503 | 84641 | 109.0 |
| December | 71915 | 73349 | 57796 | 58345 | 90748 | 55.5 |
| TOTAL | 393240 | 481279 | 394364 | 359593 | 610345 | 69.7 |

| | | | | | |
|------------------------|-----|-----|-----|-----|-----|
| Number of Calls | 262 | 328 | 258 | 267 | 314 |
|------------------------|-----|-----|-----|-----|-----|

VISITOR ARRIVALS BY CATEGORY

| Category | 2003 | 2004 | 2005 | 2006 | 2007 | % Share 2007 |
|-------------------------|---------------|---------------|---------------|---------------|---------------|-------------------------|
| Tourists | 276948 | 298431 | 317939 | 302510 | 287518 | 31.7 |
| Cruise Passenger | 393240 | 481279 | 394364 | 359593 | 610345 | 67.4 |
| Other Same-day Visitors | 12817 | 11441 | 7541 | 7051 | 7777 | 0.9 |
| TOTAL | 683005 | 791151 | 719844 | 669154 | 905640 | 100.0 |

TOURIST ACCOMMODATION (Rooms)

| Type of Accommodation | 2003 | 2004 | 2005 | 2006 | 2007 |
|------------------------------|-------------|-------------|-------------|-------------|-------------|
| Hotels | 3079 | 3123 | 3572 | 3798 | 3981 |
| Apartments | 57 | 159 | 166 | 500 | 470 |
| Guest Houses | 370 | 405 | 439 | 439 | 438 |
| Villas\Cottages | 243 | 287 | 334 | 439 | - |
| TOTAL | 3749 | 3974 | 4511 | 5176 | 4889 |

Sources: St Lucia Tourist Board and Government Statistical Department

ST. MAARTEN

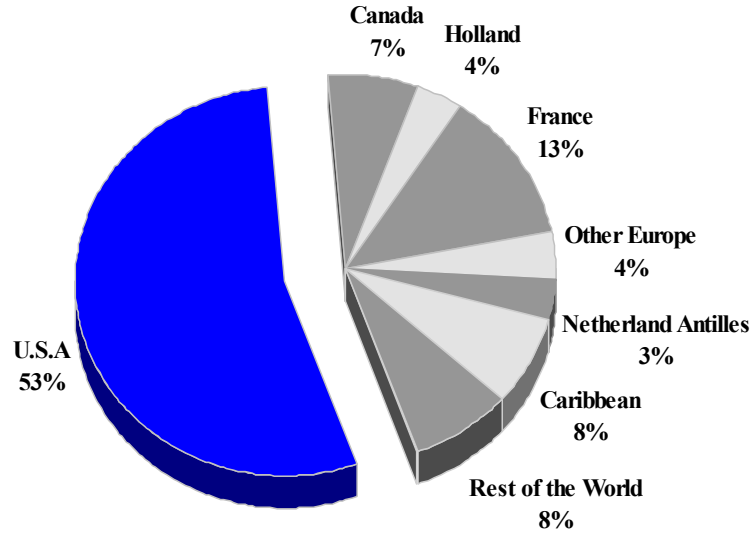
TOURISM HIGHLIGHTS FOR 2007

| VISITOR ARRIVALS | | | |
|--|---------|--|-----------|
| Tourist Arrivals ✈ | 469,407 | Cruise Passengers | 1,421,906 |
| ➡ <i>Summer</i> | 59.9% | ➡ <i>Summer</i> | 53.5% |
| ➡ <i>Winter</i> | 40.1% | ➡ <i>Winter</i> | 46.5% |
| Average Length of Stay (<i>nights</i>) | n.a. | Cruise Ship Calls | 614 |
| TOURISM AND OTHER RELATED ECONOMIC STATISTICS | | | |
| Total Expenditure (<i>US\$ millions</i>) ^{III} * | \$612.8 | Consumer Price Index (<i>%ch 2004/'03</i>) | 2.1% |
| Tourism Budget (<i>US\$ thousands</i>) ^{III} ^b | \$5,003 | | |
| ACCOMMODATION STATISTICS | | SOCIO-ECONOMIC STATISTICS | |
| Rooms ^V | 3,532 | Land Area (<i>square Kilometres</i>) | 34 |
| Room Occupancy Rates | 63.0% | Population (<i>thousand mid year 2006</i>) | 37.6 |

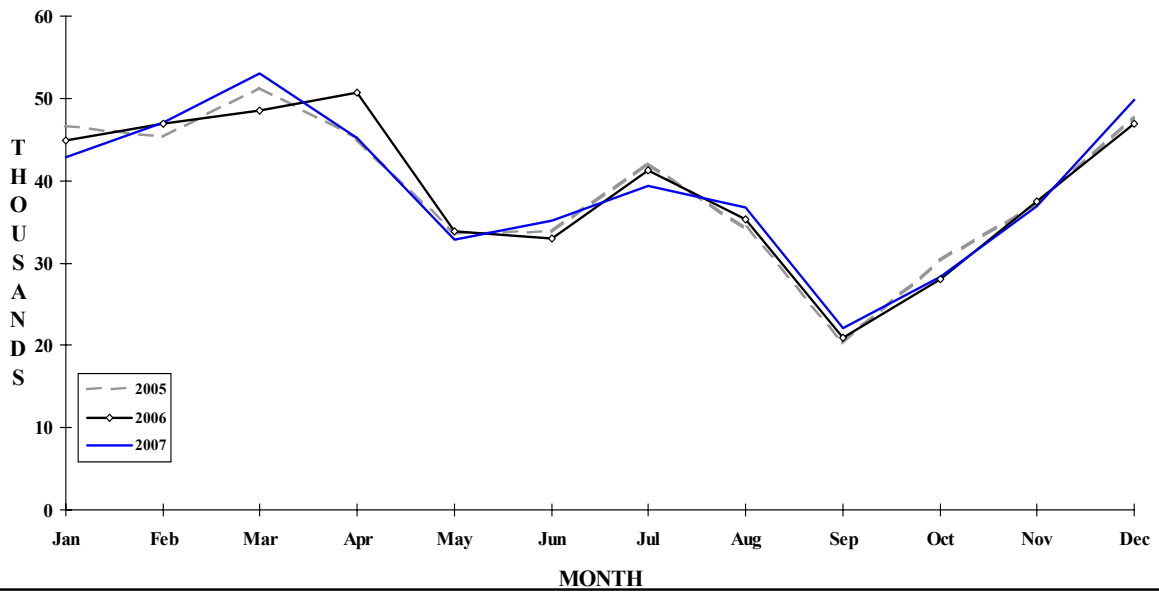
* Includes Visitor Expenditure for Saba and St. Eustatius

ST. MAARTEN

TOURIST ARRIVALS BY MAIN MARKETS 2007



MONTHLY TOURIST ARRIVALS



TOURIST ARRIVALS BY NATIONALITY*

| Nationality | 2003 | 2004 | 2005 | 2006 | 2007 | % Share 2007 |
|-----------------|---------------|---------------|---------------|---------------|---------------|-----------------|
| United States | 222247 | 251156 | 246858 | 246064 | 253831 | 54.1 |
| Canada | 29545 | 31667 | 34506 | 30646 | 32350 | 6.9 |
| Holland | 12918 | 15554 | 15441 | 15842 | 16889 | 3.6 |
| France** | 58801 | 62109 | 60524 | 63475 | 61110 | 13.0 |
| Other Europe | 16540 | 18740 | 17856 | 17741 | 18366 | 3.9 |
| Neth. Antilles | 14742 | 15505 | 16650 | 15746 | 15543 | 3.3 |
| Other Caribbean | 39913 | 44906 | 40426 | 39034 | 35209 | 7.5 |
| Rest of World | 32881 | 35394 | 35600 | 39256 | 36109 | 7.7 |
| TOTAL | 427587 | 475031 | 467861 | 467804 | 469407 | 100.0 |

*By air, including persons destined for St Martin (the French side of the island); Excludes inter-Antillean arrivals

**Includes citizens of the French West Indies.

MONTHLY TOURIST ARRIVALS*

| Month | 2003 | 2004 | 2005 | 2006 | 2007 | % Change 2007/06 |
|--------------|---------------|---------------|---------------|---------------|---------------|---------------------|
| January | 39441 | 45348 | 46632 | 44945 | 42879 | -4.6 |
| February | 38927 | 47277 | 45338 | 46890 | 47098 | 0.4 |
| March | 40297 | 48575 | 51264 | 48515 | 53005 | 9.3 |
| April | 40344 | 48248 | 45246 | 50643 | 45123 | -10.9 |
| May | 31833 | 36054 | 33578 | 33782 | 32863 | -2.7 |
| June | 30845 | 32197 | 33816 | 32962 | 35085 | 6.4 |
| July | 36133 | 40203 | 42150 | 41273 | 39346 | -4.7 |
| August | 36380 | 38499 | 34245 | 35311 | 36683 | 3.9 |
| September | 19613 | 21757 | 20387 | 20885 | 22154 | 6.1 |
| October | 29445 | 30009 | 30309 | 28056 | 28329 | 1.0 |
| November | 38194 | 39293 | 37150 | 37550 | 36968 | -1.6 |
| December | 46135 | 47571 | 47746 | 46992 | 49874 | 6.1 |
| TOTAL | 427587 | 475031 | 467861 | 467804 | 469407 | 0.3 |

*Arrivals at Juliana Airport (includes visitors destined for St Martin)

CRUISE PASSENGER ARRIVALS

| Month | 2003 | 2004 | 2005 | 2006 | 2007 | % Change 2007/06 |
|--------------|----------------|----------------|----------------|----------------|----------------|---------------------|
| January | 134540 | 147680 | 178231 | 165773 | 195692 | 18.0 |
| February | 117452 | 141009 | 164100 | 157220 | 160426 | 2.0 |
| March | 121033 | 158411 | 182012 | 176707 | 176115 | -0.3 |
| April | 122066 | 133212 | 150387 | 146473 | 128574 | -12.2 |
| May | 60364 | 75237 | 79501 | 89624 | 76668 | -14.5 |
| June | 52064 | 87210 | 77829 | 69248 | 69046 | -0.3 |
| July | 65496 | 80113 | 74366 | 66864 | 67025 | 0.2 |
| August | 62565 | 61555 | 69554 | 74942 | 88132 | 17.6 |
| September | 50126 | 40933 | 63183 | 63630 | 63766 | 0.2 |
| October | 70740 | 81510 | 116473 | 82239 | 85007 | 3.4 |
| November | 142956 | 154391 | 172452 | 158110 | 146734 | -7.2 |
| December | 172332 | 187189 | 160373 | 170815 | 168021 | -1.6 |
| TOTAL | 1171734 | 1348450 | 1488461 | 1421645 | 1425206 | 0.3 |

| | | | | | |
|------------------------|-----|-----|-----|-----|-----|
| Number of Calls | 597 | 666 | 641 | 609 | 614 |
|------------------------|-----|-----|-----|-----|-----|

TOURIST ACCOMMODATION (Rooms)

| Type of Accommodation | 2003 | 2004 | 2005 | 2006 | 2007 |
|--------------------------|-------------|------------|------------|------------|------------|
| Hotels | n.a | n.a | n.a | n.a | n.a |
| Guest Houses | n.a | n.a | n.a | n.a | n.a |
| Villas/Condos/Apartments | n.a | n.a | n.a | n.a | n.a |
| Other | n.a | n.a | n.a | n.a | n.a |
| Total | 3532 | n.a | n.a | n.a | n.a |

Note: The number of rooms in French St Martin was 2903 in 1995 (See Guadeloupe)
Source: St. Maarten Tourist Bureau

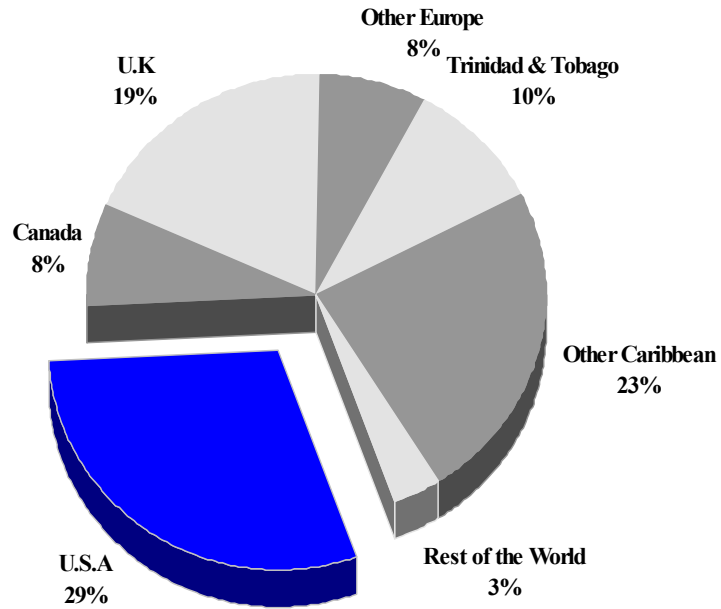
ST VINCENT AND THE GRENADINES

TOURISM HIGHLIGHTS FOR 2007

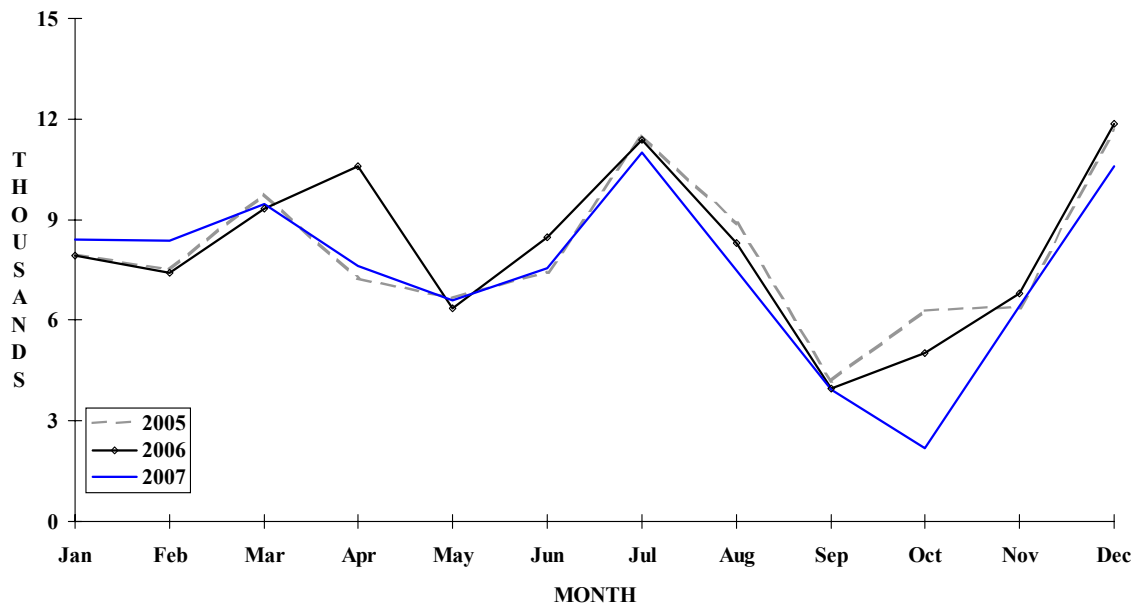
| VISITOR ARRIVALS | | | |
|---|---------|--|---------|
| Tourist Arrivals → | 89,637 | Cruise Passengers | 144,555 |
| → <i>Summer</i> | 62.2% | → <i>Summer</i> | 38.3% |
| → <i>Winter</i> | 37.8% | → <i>Winter</i> | 61.7% |
| | | Yacht Passengers | 42,277 |
| VISITOR PROFILE | | | |
| Average Length of Stay (<i>nights</i>) ¹ | 12.30 | Tourist Arrivals by Place of Stay¹ | |
| Tourist Arrivals by Purpose of Visit¹ | | → <i>Hotels</i> | 46.6% |
| → <i>Holiday</i> | 60.8% | → <i>Guest House/Apartment</i> | 9.7% |
| → <i>Business</i> | 16.7% | → <i>Private</i> | 0.0% |
| → <i>Other</i> | 22.5% | → <i>Other</i> | 34.8% |
| TOURISM AND OTHER RELATED ECONOMIC STATISTICS | | | |
| Total Expenditure (<i>US\$ millions</i>) ¹ | \$113.3 | GDP at Factor Cost (<i>US\$ millions</i>) ^{III} | \$337.6 |
| Tourism Budget (<i>US\$ thousand</i>) ^b | \$4,161 | Consumer Price Index (<i>%ch. 2004/'03</i>) | 3.0% |
| | | Hotel and Restaurant contribution to GDP | 1.9% |
| ACCOMMODATION STATISTICS | | SOCIO-ECONOMIC STATISTICS | |
| Rooms ¹ | 1,778 | Land Area (<i>square Kilometres</i>) | 389.0 |
| | | Population (<i>thousand mid year 2004</i>) | 105.3 |

ST. VINCENT & THE GRENADINES

TOURIST ARRIVALS BY MAIN MARKETS 2007



MONTHLY TOURIST ARRIVALS



ST VINCENT AND THE GRENADINES

TOURIST ARRIVALS BY COUNTRY OF RESIDENCE

| Country of Residence | 2003 | 2004 | 2005 | 2006 | 2007 | % share 2007 |
|----------------------|--------------|--------------|--------------|--------------|--------------|-----------------|
| United States | 22194 | 25106 | 27153 | 28598 | 26642 | 29.7 |
| Canada | 4918 | 5219 | 6187 | 6542 | 6745 | 7.5 |
| United Kingdom | 11547 | 12610 | 13941 | 14837 | 16742 | 18.7 |
| Other Europe | 5655 | 6042 | 5987 | 7124 | 6712 | 7.5 |
| Trinidad & Tobago | 9654 | 10194 | 11683 | 11002 | 8610 | 9.6 |
| Other Caribbean | 23121 | 25819 | 28261 | 27217 | 21349 | 23.8 |
| Rest of World | 1446 | 1737 | 2292 | 2112 | 2837 | 3.2 |
| TOTAL | 78535 | 86727 | 95504 | 97432 | 89637 | 100.0 |

MONTHLY TOURIST ARRIVALS

| Month | 2003 | 2004 | 2005 | 2006 | 2007 | % Change 2007/06 |
|--------------|--------------|--------------|--------------|--------------|--------------|---------------------|
| January | 5417 | 6038 | 7963 | 7943 | 8406 | 5.8 |
| February | 4009 | 6394 | 7515 | 7404 | 8381 | 13.2 |
| March | 6175 | 5165 | 9764 | 9345 | 9461 | 1.2 |
| April | 6987 | 8307 | 7255 | 10581 | 7636 | -27.8 |
| May | 5549 | 6891 | 6670 | 6359 | 6579 | 3.5 |
| June | 7077 | 7249 | 7444 | 8470 | 7538 | -11.0 |
| July | 10106 | 10822 | 11514 | 11373 | 11010 | -3.2 |
| August | 8142 | 8790 | 8871 | 8316 | 7468 | -10.2 |
| September | 3473 | 3425 | 4191 | 3951 | 3935 | -0.4 |
| October | 5238 | 5379 | 6271 | 5039 | 2194 | -56.5 |
| November | 5508 | 6627 | 6400 | 6789 | 6440 | -5.1 |
| December | 10854 | 11640 | 11646 | 11862 | 10589 | -10.7 |
| TOTAL | 78535 | 86727 | 95504 | 97432 | 89637 | -8.0 |

ST VINCENT AND THE GRENADINES

CRUISE PASSENGER ARRIVALS*

| Month | 2003 | 2004 | 2005 | 2006 | % Change | |
|--------------|--------------|--------------|--------------|---------------|---------------|-------------|
| | | | | | 2007 | 2007/06 |
| January | 9718 | 15712 | 8979 | 18827 | 30142 | 60.1 |
| February | 7173 | 12906 | 7909 | 19712 | 23292 | 18.2 |
| March | 11403 | 15027 | 13257 | 15393 | 20843 | 35.4 |
| April | 4977 | 12310 | 3764 | 8766 | 14918 | 70.2 |
| May | 689 | 744 | 287 | 422 | 6890 | 1532.7 |
| June | 609 | 375 | 231 | 212 | 2420 | 1041.5 |
| July | 1250 | 743 | 153 | 240 | 2861 | 1092.1 |
| August | 807 | 144 | 75 | 120 | 4513 | 3660.8 |
| September | 182 | 196 | 82 | 180 | 2206 | 1125.6 |
| October | 2127 | 2784 | 2501 | 1644 | 5135 | 212.3 |
| November | 8314 | 8246 | 11735 | 16701 | 11053 | -33.8 |
| December | 17359 | 8398 | 20780 | 24257 | 20282 | -16.4 |
| TOTAL | 64608 | 77585 | 69753 | 106474 | 144555 | 35.8 |

VISITOR ARRIVALS BY FIRST PORT OF ENTRY IN 2006

| Port | St. Vincent | Bequia | Mustique | Canouan | Union Island | Total |
|-------|-------------|--------|----------|---------|--------------|---------------|
| Air* | 68398 | 3193 | 6795 | 9060 | 8990 | 96436 |
| Sea** | 89893 | 42230 | 616 | 456 | 53637 | 186832 |

* Includes same-day visitors

** Includes Cruiseship and Yacht Passengers

| Type of Accommodation | 2003 | 2004 | 2005 | 2006 | 2007 |
|-----------------------|-------------|-------------|-------------|-------------|------------|
| Hotels | 915 | 839 | 826 | 915 | n.a |
| Apartments | 358 | 526 | 526 | 358 | n.a |
| Cottages, Villas, | 240 | 249 | 249 | 240 | n.a |
| Guest Houses | 167 | 265 | 171 | 265 | n.a |
| TOTAL | 1680 | 1879 | 1772 | 1778 | n.a |

Source: Department of Tourism, St Vincent and the Grenadines