

## BRITISH VIRGIN ISLANDS

### Visitor Arrival Summary

Tourist Arrivals to the British Virgin Islands (BVI) continued the downward trend in 2009, slipping by 10.7 percent. The year end total was registered at 308.8 thousand Stay Over arrivals. There was a significant reduction in arrivals during the Winter period (January to April), when 16.3 percent fewer tourists visited. Arrivals during the Summer season receded similarly, albeit only by 6.5 percent.

- ◆ Tourist Arrivals by Main Markets are unavailable.
- ◆ The BVI hosted 41.4 thousand fewer Cruise Passengers in 2009. This represented a 7.2 percent drop below the 2008 total. This occurred even though 421 cruise ship calls were recorded, up from the 408 in 2008.

### TOURISM HIGHLIGHTS FOR 2009

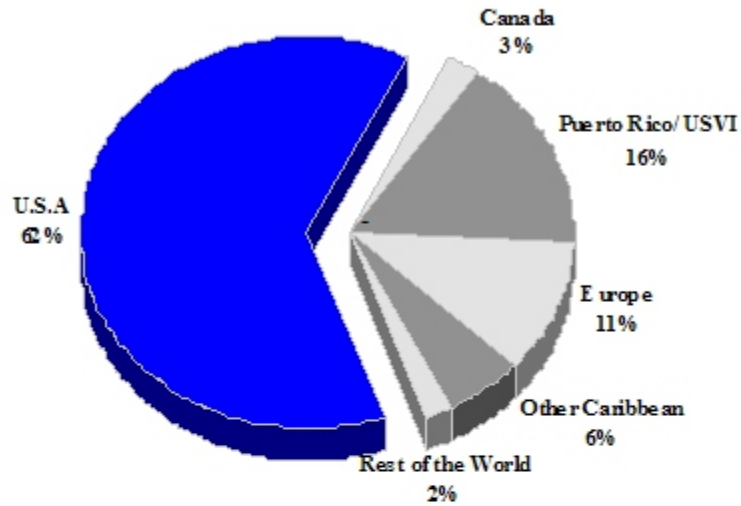
VISITOR ARRIVALS			
Tourist Arrivals → *	308,793	Cruise Passengers *	530,327
↳ Summer	40.4%	↳ Summer	62.0%
↳ Winter	59.6%	↳ Winter	38.0%
Same day visitors	17,744	Cruise Ship calls	421
VISITOR PROFILE			
Average Length of Stay (nights) <sup>I</sup>	10.5	<b>Tourist Arrivals by Place of Stay<sup>IV</sup></b>	
<b>Tourist Arrivals by Purpose of Visit<sup>IV</sup></b>		↳ Hotels	28.0%
↳ Holiday	96.3%	↳ Charter Boats	55.1%
↳ Business	1.9%	↳ Private	9.2%
↳ Other	1.8%	↳ Other Accommodation	7.7%
TOURISM AND OTHER RELATED ECONOMIC STATISTICS			
Visitor Expenditure (US\$ millions) <sup>I</sup>	\$552.4	Tourism Budget (US\$ thousands) <sup>III b</sup>	\$11,580
Hotel and Restaurant contribution to GDP <sup>I</sup>	15.6%	GDP at Factor Cost (US\$ millions) <sup>I</sup>	\$1095.2
		Consumer Price Index (%ch. 2009/'08)	3.0%
ACCOMMODATION STATISTICS		SOCIO-ECONOMIC STATISTICS	
Rooms *	2,353	Land Area (square Kilometres)	150
Room Occupancy Rates <sup>III</sup>	67.3%	Population (thousand mid year 2006)	26.7

\* Development Planning Unit estimate

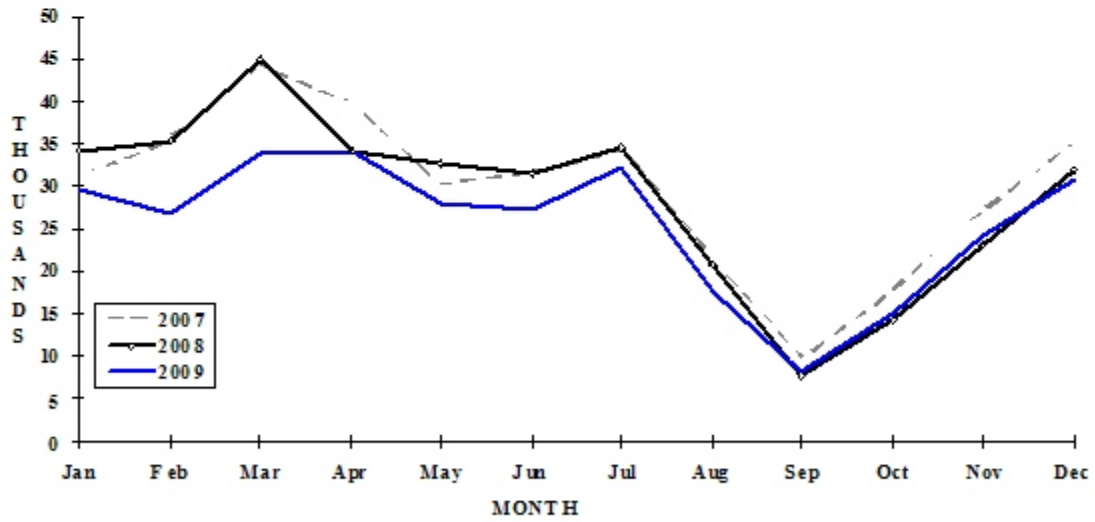
# BRITISH VIRGIN ISLANDS

## TOURIST ARRIVALS BY MAIN MARKETS

2009<sup>e</sup>



## MONTHLY TOURIST ARRIVALS



**BRITISH VIRGIN ISLANDS**

**TOURIST ARRIVALS BY COUNTRY OF RESIDENCE**

Country of Residence	2005	2006	2007	2008	% Share	
					2009	2009
United States	n.a	n.a	n.a	n.a	n.a	-
Canada	n.a	n.a	n.a	n.a	n.a	-
Europe	n.a	n.a	n.a	n.a	n.a	-
Puerto Rico/USVI	n.a	n.a	n.a	n.a	n.a	-
Other Caribbean	n.a	n.a	n.a	n.a	n.a	-
South America	n.a	n.a	n.a	n.a	n.a	-
Other	n.a	n.a	n.a	n.a	n.a	-
<b>TOTAL</b>	<b>337135</b>	<b>356271</b>	<b>358056</b>	<b>345934</b>	<b>308793</b>	<b>-</b>

**MONTHLY TOURIST ARRIVALS**

Month	2005	2006	2007	2008	% Change	
					2009	2009/08
January	30004	29849	31158	34221	29514	-13.8
February	27564	34533	35457	35355	27080	-23.4
March	48315	43140	44096	45103	33880	-24.9
April	33341	41703	39965	34302	34230	-0.2
May	29510	32486	30262	32713	28034	-14.3
June	32057	31171	31699	31469	27350	-13.1
July	38047	35565	34214	34805	32331	-7.1
August	21518	20027	21605	20817	17849	-14.3
September	9725	9815	9755	7949	8195	3.1
October	15137	14725	17747	14209	15137	6.5
November	22146	27320	27168	23125	24382	5.4
December	29771	35937	34930	31866	30811	-3.3
<b>TOTAL</b>	<b>337135</b>	<b>356271</b>	<b>358056</b>	<b>345934</b>	<b>308793</b>	<b>-10.7</b>

**BRITISH VIRGIN ISLANDS**

**TOURIST ARRIVALS BY TYPE OF ACCOMMODATION**

Place of Stay	2001	2002	2003	2004	% Share	
					2005	2005
Hotel	73714	57790	60299	85096	94447	28.0
Rented Accom.	19757	22740	23691	27549	30576	9.1
Own Home/Friends	21612	24160	21517	23727	26331	7.8
Charter Boats	180542	177005	212251	167384	185778	55.1
<b>TOTAL</b>	<b>295625</b>	<b>281695</b>	<b>317758</b>	<b>303756</b>	<b>337132</b>	<b>100.0</b>

**CRUISE PASSENGER ARRIVALS**

Month	2005	2006	2007	2008	% Change	
					2009	2009/08
January	67886	98315	79872	111838	98263	-12.1
February	60291	67262	78444	85776	86691	1.1
March	63043	64620	80467	98338	80416	-18.2
April	40194	50971	48983	55229	63362	14.7
May	15558	13534	23602	21354	13954	-34.7
June	13754	11823	17921	12149	6087	-49.9
July	14440	12643	18701	13583	6292	-53.7
August	14366	15226	19242	6198	6291	1.5
September	10492	10792	12176	6712	5365	-20.1
October	29092	22966	22487	14758	19816	34.3
November	52009	43478	70848	46344	63005	36.0
December	68027	62357	102468	99470	80785	-18.8
<b>Total</b>	<b>449152</b>	<b>473987</b>	<b>575211</b>	<b>571749</b>	<b>530327</b>	<b>-7.2</b>
Cruise ship calls	407	398	442	408	421	
Charter yachts	n.a	n.a	n.a	n.a	n.a	

**TOURIST ACCOMMODATION (Rooms on land)**

Area	2005	2006	2007	2008	2009
Hotels	1257	1267	1246	1357	1373
Guest Houses/Apartments	581	636	655	972	980
<b>TOTAL</b>	<b>1838</b>	<b>1903</b>	<b>1901</b>	<b>2329</b>	<b>2353</b>

*Source: Development Planning Unit - British Virgin Islands*

## CAYMAN ISLANDS

### Visitor Arrival Summary

Tourist Arrivals to the Cayman Islands suffered a 10.2 percent decline in 2009, when almost 272.0 thousand stay over arrivals were recorded. This was down from the 2008 total of 302.9 thousand. Tourist arrivals in the first ten months of the year saw depressed numbers, with most of the declines being in double digits. November and December had marginal increases of 4.5 percent and 5.0 percent respectively.

- ◆ Arrivals from all major source markets spiraled downward back toward the 2006 aggregates. The USA continued to be the major source market, holding a 79.1 percent of total Tourist Arrivals to the Cayman Islands, but fell by 10.6 percent in 2009. The Caribbean, holding a 7.6 percent market share shrank by 9.1 percent. Arrivals from Canada (6.3 percent market share) declined by 7.0 percent, and arrivals from the United Kingdom (5.2 percent market share) falling by 8.9 percent.
- ◆ Some 1,520.4 thousand passengers sailed into port throughout 2009. There were generally fewer passengers arriving in the Winter months, whereas, arrivals in the Summer saw encouraging increases. These performances gave rise to a 14.5 percent drop in the Winter and a 8.2 percent rise in the Summer. Overall, there was a 2.1 percent reduction in Cruise Passenger Arrivals or 32.7 thousand fewer than 2008.

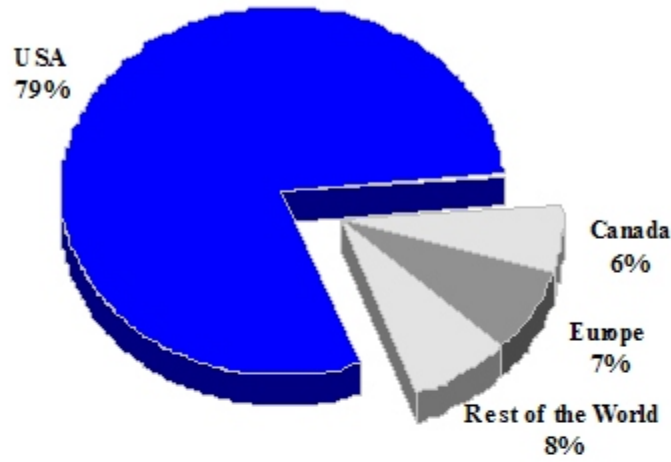
### TOURISM HIGHLIGHTS FOR 2009

VISITOR ARRIVALS			
Tourist Arrivals ✈	271,958	Cruise Passengers	1,520,372
➤ Summer	40.1%	➤ Summer	39.8%
➤ Winter	59.9%	➤ Winter	60.2%
		Cruise Ship calls	547
VISITOR PROFILE			
Average Length of Stay (nights) <sup>I</sup>	6.4	<b>Tourist Arrivals by Place of Stay<sup>II</sup></b>	
<b>Tourist Arrivals by Purpose of Visit<sup>II</sup></b>		➤ Hotels	36.8%
➤ Holiday	82.5%	➤ Guest Houses/Apartments	20.5%
➤ Business	7.2%	➤ Private homes	15.6%
➤ Other	10.3%	➤ Other	27.1%
TOURISM AND OTHER RELATED ECONOMIC STATISTICS			
Visitor Expenditure (US\$ millions) <sup>I</sup>	\$529.6	GDP at Market Prices (US\$ millions) <sup>I</sup>	\$2,817.6
Tourism Budget (US\$ thousands) <sup>VII</sup>	\$21,487	Consumer Price Index (% ch. 2009/'08)	-1.3%
ACCOMMODATION STATISTICS		SOCIO-ECONOMIC STATISTICS	
Rooms	4,332	Land Area (square Kilometres)	260
Room Occupancy Rates - Hotel	69.0%	Population (thousand mid year 2009)	56.0
- Non-hotel**	43.9%		

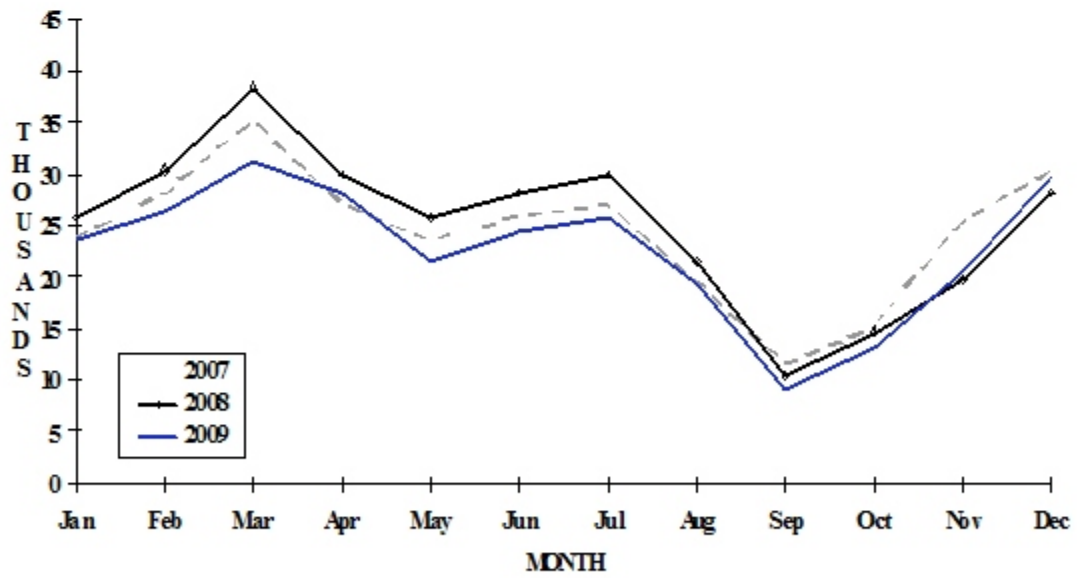
\*\* Includes apartments, condos, guesthouses, villas and bed & breakfast accommodations.

# CAYMAN ISLANDS

## TOURIST ARRIVALS BY MAIN MARKETS 2009



## MONTHLY TOURIST ARRIVALS



## CAYMAN ISLANDS

## TOURIST ARRIVALS BY COUNTRY OF RESIDENCE

Country of Residence	2005	2006	2007	2008	% Share	
					2009	2009
United States	118843	217364	231865	240462	215037	79.1
Canada	10480	14910	17355	18544	17254	6.3
United Kingdom	9991	12788	15206	15438	14065	5.2
Other Europe	2725	4622	5149	5833	5052	1.9
Jamaica	17005	7610	10262	10470		
Other Caribbean *	3211	3750	4631	4701	20550	7.6
Rest of World	5546	6214	7035	7431		
<b>TOTAL</b>	<b>167801</b>	<b>267258</b>	<b>291503</b>	<b>302879</b>	<b>271958</b>	<b>100.0</b>

\* Includes Costa Rica

## MONTHLY TOURIST ARRIVALS

Month	2005	2006	2007	2008	% Change	
					2009	2009/08
January	9601	20163	23726	25845	23404	-9.4
February	13202	25004	27947	30380	26482	-12.8
March	18810	31493	35146	38425	31194	-18.8
April	15423	28403	27003	29978	27973	-6.7
May	12061	21172	23427	25722	21438	-16.7
June	14008	24251	25837	27971	24149	-13.7
July	16610	24256	26895	30008	25775	-14.1
August	11917	18064	19481	21629	19231	-11.1
September	8494	10155	11457	10330	9115	-11.8
October	11104	14634	15102	14710	13018	-11.5
November	14979	22276	25227	19731	20614	4.5
December	21592	27386	30255	28150	29565	5.0
<b>TOTAL</b>	<b>167801</b>	<b>267257</b>	<b>291503</b>	<b>302879</b>	<b>271958</b>	<b>-10.2</b>

## CRUISE PASSENGER ARRIVALS

Month						% Change	
	2005	2006	2007	2008	2009	2009/08	
January	170961	211678	224880	195217	161657	-17.2	
February	201761	180675	203734	176154	136809	-22.3	
March	252586	253124	217690	182622	167418	-8.3	
April	166289	182790	170239	153049	138876	-9.3	
May	126530	112374	130555	101312	119329	17.8	
June	110633	112190	95966	93120	122863	31.9	
July	86539	122781	109196	108514	108894	0.4	
August	122562	144179	99753	87381	99211	13.5	
September	118466	110971	69802	69372	89891	29.6	
October	65651	128754	94588	105366	98610	-6.4	
November	176587	160373	137234	117221	118292	0.9	
December	200434	210247	162029	163221	158522	-2.9	
<b>TOTAL</b>	<b>1798999</b>	<b>1930136</b>	<b>1715666</b>	<b>1552549</b>	<b>1520372</b>	<b>-2.1</b>	
Cruise ship calls	784	802	657	570	547		

## TOURIST ACCOMMODATION (Rooms)

Type of Accommodation *	2005	2006	2007	2008	2009
Hotels	-	2205	2197	2188	1959
Apts./Cottages	-	-	-	-	-
Guest Houses	-	-	-	-	-
Other **	-	1702	2287	2417	2373
<b>TOTAL</b>	<b>n.a</b>	<b>3907</b>	<b>4484</b>	<b>4605</b>	<b>4332</b>

\* As of the 30<sup>th</sup> of September each year.

\*\* Includes apartments, condos, guesthouses, villas and bed & breakfast accommodations.

Source: Department of Tourism, Cayman Islands



## CUBA

### Visitor Arrival Summary

Stay Over arrivals to Cuba continued to perform creditably in 2009, with a 3.5 percent increase in numbers visiting this Spanish speaking island, reaching 2.4 million. Tourist arrivals in the Winter season were slightly up by 1.9 percent while Summer season arrivals grew by 4.7 percent.

- ◆ Tourist Arrivals from Europe accounted for 30.4 percent of all arrivals to Cuba in 2009, which was a sharp 18.8 percent decrease compared with the 2008 numbers from this market. This meant that the European market share slid by 8.3 percent over the 2008 figure. The most robust growth in tourist arrivals was seen in arrivals from the United States, where numbers jumped by 25.2 percent, surpassing the 50.0 thousand mark. Meanwhile, the Canadian market continued to do well, registering an 11.8 percent increase, claiming an increased 37.7 percent share of the Tourist market.

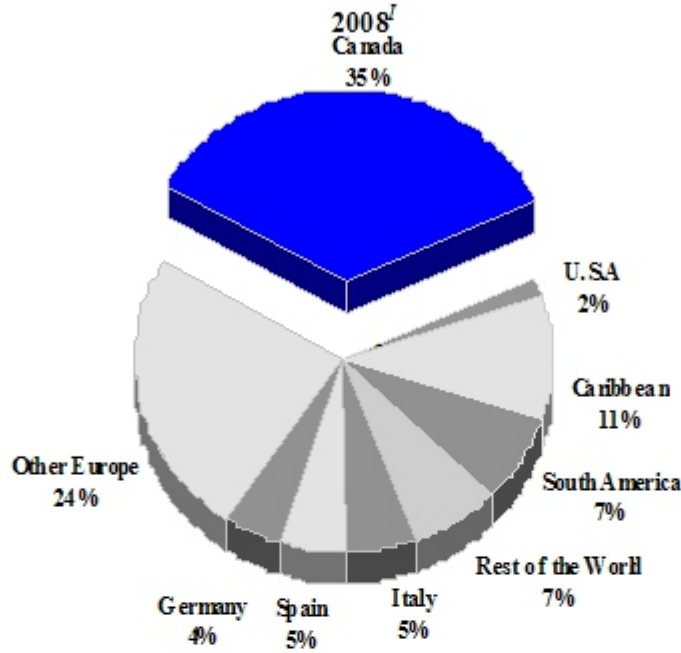
### TOURISM HIGHLIGHTS FOR 2009

VISITOR ARRIVALS			
Tourist Arrivals ➔	2,429,809	Cruise Passengers	<u>NOT AVAILABLE</u>
➔ Summer	43.1%		
➔ Winter	56.9%		
VISITOR PROFILE			
Average Length of Stay ( <i>nights</i> ) <sup>I</sup>	11.1	<b>Tourist Arrivals by Purpose of Visit</b> <sup>I</sup>	
		➔ <i>Holiday</i>	94.5%
		➔ <i>Business</i>	0.5%
		➔ <i>Other</i>	4.9%
TOURISM AND OTHER RELATED ECONOMIC STATISTICS			
Total Expenditure ( <i>US\$ millions</i> ) <sup>I</sup>	\$2,359.0	GDP at Factor Cost ( <i>US\$ millions</i> ) <sup>II#</sup>	\$43,883.3
		Hotel and Restaurant contribution to GDP <sup>VI</sup>	28.8%
ACCOMMODATION STATISTICS		SOCIO-ECONOMIC STATISTICS	
Rooms <sup>I</sup>	49,370	Land Area ( <i>square Kilometres</i> )	110,860
Room Occupancy Rates <sup>I</sup>	60.1%	Population ( <i>thousand mid year 2007</i> )	11,237.9

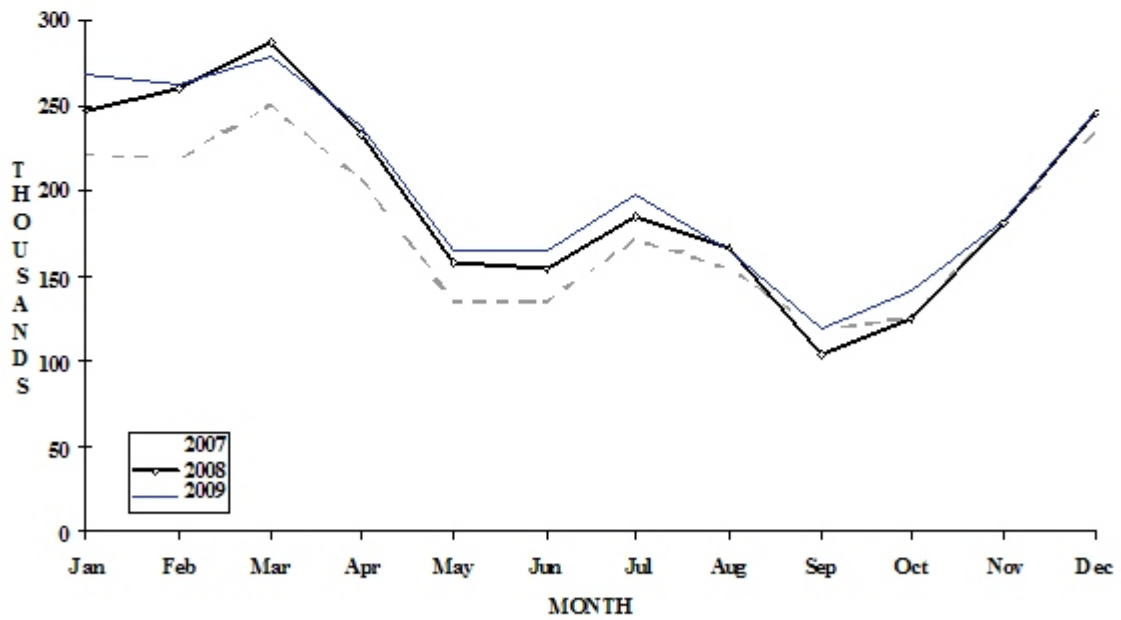
<sup>#</sup> Figure used is Gross Social Product

# CUBA

**TOURIST ARRIVALS BY MAIN MARKETS**



**MONTHLY TOURIST ARRIVALS**



## CUBA

## TOURIST ARRIVALS BY COUNTRY OF RESIDENCE\*

Country of Residence	2004	2005	2006	2007	% Share	
					2008	2008
United States	49856	37233	36808	40521	41904	1.8
Canada	563371	602377	604263	660384	818246	34.8
Italy	178570	169317	144249	134289	126042	5.4
Spain	146236	194103	185531	133149	121166	5.2
Germany	143644	124527	114292	103054	100964	4.3
Other Europe	508277	559722	569201	553533	560914	23.9
South America	163206	280827	186140	117225	159245	6.8
Caribbean	144861	176455	187577	215303	246907	10.5
Other	150551	174773	192506	194763	172952	7.4
<b>Total</b>	<b>2048572</b>	<b>2319334</b>	<b>2220567</b>	<b>2152221</b>	<b>2348340</b>	<b>100.0</b>

\* Includes same-day visitors

° Includes Central America

## MONTHLY TOURIST ARRIVALS

Month	2005	2006	2007	2008	% Change	
					2009	2009/08
January	238729	235500	221226	248446	268115	7.9
February	232938	247475	217908	259832	262985	1.2
March	252009	260446	250404	286145	279199	-2.4
April	215757	233259	206470	232668	236301	1.6
May	142354	155132	135326	158824	164652	3.7
June	140868	146413	135008	153727	164941	7.3
July	199129	178758	171452	185585	196990	6.1
August	189692	160456	154306	167826	163875	-2.4
September	146286	116421	118768	104098	119914	15.2
October	151782	120506	124868	124512	142544	14.5
November	192491	155142	182999	180613	182778	1.2
December	217299	211059	233486	246064	247515	0.6
<b>TOTAL</b>	<b>2319334</b>	<b>2220567</b>	<b>2152221</b>	<b>2348340</b>	<b>2429809</b>	<b>3.5</b>

**TOURIST ACCOMMODATION (Rooms)**

<b>Category</b>	<b>2004</b>	<b>2005</b>	<b>2006</b>	<b>2007</b>	<b>2008</b>
2-Star	4099	4110	3254	3366	3452
3-Star	7698	8674	9358	9980	10897
4-Star	18523	19061	19686	19783	20982
5-Star	8106	8458	10602	10803	10889
Other*	6755	6323	3911	3438	2874
<b>TOTAL</b>	<b>45181</b>	<b>46626</b>	<b>46811</b>	<b>47370</b>	<b>49094</b>

*Source: National Institute of Tourism (Intur), Cuba*

## CURACAO

### Visitor Arrival Summary

The Dutch-speaking island of Curacao experienced a 10.3 percent decline in Tourist Arrivals in 2009. Some 366.7 thousand Stay Over visitors came to this small territory, down from 408.9 thousand in the previous year.

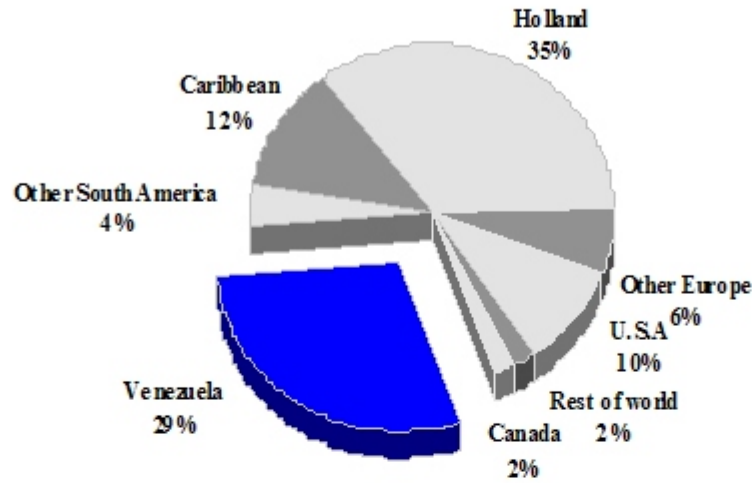
- ◆ The two main source markets had opposite performances in 2009. Holland with a 34.6 percent share of total arrivals, grew by almost 12.0 percent, whereas Venezuela with a 28.8 percent market share, experienced a sizeable 29.1 percent contraction in arrivals. Overall, European arrivals grew by 9.2 percent accounting for a mammoth 40.71 percent of Stay Overs. Arrivals from the United States market shrank by almost 18.0 percent, ending below the 43.7 thousand recorded in 2008, with an aggregate of 36.0 thousand in 2009. Arrivals from the Caribbean, accounting for 12.7 percent share of the market, declined by 3.2 percent, ending at 46.6 thousand. The heaviest losses were sustained in the Summer period, where 13.7 fewer tourists visited. This was caused by the major reductions in November (28.6 percent) and December (47.3 percent).
- ◆ Cruise Passenger arrivals surmounted the 400.0 thousand mark for the first time ever, growing from 352.9 thousand in 2008 to 423.0 thousand in 2009, an increase of just under 20.0 percent. This increased volume arrived in the 234 cruise ship calls to Curacao. The most significant growth occurred in August, September and October.

### TOURISM HIGHLIGHTS FOR 2009

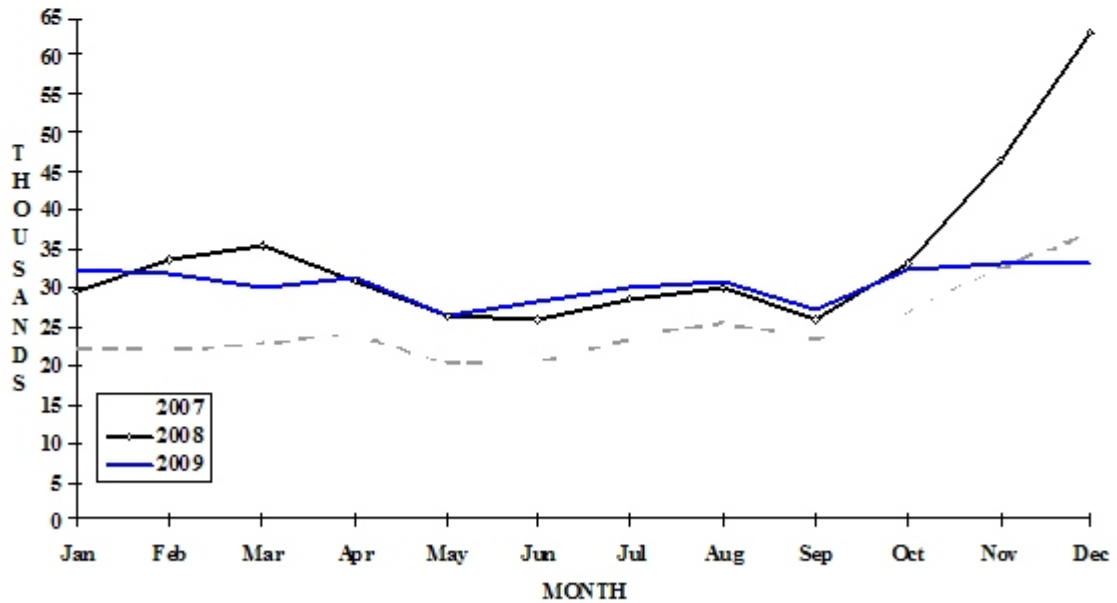
VISITOR ARRIVALS			
Tourist Arrivals →	366,703	Cruise Passengers	423,088
→ <i>Summer</i>	65.9%	→ <i>Summer</i>	43.6%
→ <i>Winter</i>	34.1%	→ <i>Winter</i>	56.4%
		Cruise Ship calls	234
VISITOR PROFILE			
Average Length of Stay ( <i>nights</i> ) <sup>I</sup>	9.2	<b>Tourist Arrivals by Place of Stay</b> <sup>II</sup>	
<b>Tourist Arrivals by Purpose of Visit</b> <sup>II</sup>		→ <i>Hotels</i>	59.7%
→ <i>Holiday</i>	93.9%	→ <i>Guest Houses/Apartments</i>	3.5%
→ <i>Business</i>	4.1%	→ <i>Private</i>	26.3%
→ <i>Other</i>	2.0%	→ <i>Other</i>	10.5%
TOURISM AND OTHER RELATED ECONOMIC STATISTICS			
Total Expenditure ( <i>US\$ millions</i> ) <sup>IV</sup>	\$283.7	Consumer Price Index ( <i>% ch. 2009/'08</i> )	1.8%
Tourism Budget ( <i>US\$ thousands</i> ) <sup>X</sup>	\$10,121		
ACCOMMODATION STATISTICS		SOCIO-ECONOMIC STATISTICS	
Rooms <sup>I</sup>	4,841	Land Area ( <i>square Kilometres</i> )	444
Room Occupancy Rates <sup>I</sup>	85.0%	Population ( <i>thousand mid year 2008</i> )	140.8

# CURACAO

**TOURIST ARRIVALS BY MAIN MARKETS  
2009**



**MONTHLY TOURIST ARRIVALS**



**CURACAO**

**TOURIST ARRIVALS BY COUNTRY OF RESIDENCE**

Country of Residence	2005	2006	2007	2008	% Share	
					2009	2009
United States	45563	47428	46199	43680	35953	9.8
Canada	5223	7423	6898	7244	6483	1.8
Holland	77879	85262	100384	113696	126952	34.6
Other Europe	17078	18975	20999	23051	22323	6.1
Dominican Republic	4639	3366	3231	2612	2633	0.7
Aruba	10702	12729	14442	16848	16721	4.6
Haiti	1832	1697	1730	1770	1797	0.5
Puerto Rico	963	1249	902	845	763	0.2
Other C'bean*	20030	18893	25372	26121	24728	6.7
Venezuela	24259	21446	60966	148890	105635	28.8
Other South America	10168	12291	14523	16976	15461	4.2
Rest of World	3737	3630	4086	7209	7254	2.0
<b>TOTAL</b>	<b>222073</b>	<b>234389</b>	<b>299732</b>	<b>408942</b>	<b>366703</b>	<b>100.0</b>

*\*Excludes residents of Netherlands Antilles*

**MONTHLY TOURIST ARRIVALS**

Month	2005	2006	2007	2008	% Change	
					2009	2009/08
January	19209	19479	21956	29317	32379	10.4
February	19628	20698	21789	33646	31658	-5.9
March	22727	21251	22763	35321	30001	-15.1
April	17930	21166	23972	30997	31178	0.6
May	16150	17675	20243	26602	26329	-1.0
June	15441	16259	20289	26123	28191	7.9
July	18396	18940	23492	28325	29815	5.3
August	19215	19467	25565	30135	30923	2.6
September	15578	17556	23295	25698	27334	6.4
October	18589	19873	26801	33192	32406	-2.4
November	19518	20191	32516	46728	33382	-28.6
December	19692	21834	37103	62858	33107	-47.3
<b>TOTAL</b>	<b>222073</b>	<b>234389</b>	<b>299784</b>	<b>408942</b>	<b>366703</b>	<b>-10.3</b>

## CRUISE PASSENGER ARRIVALS

Month	2005	2006	2007	2008	2009	% Change
						2009/08
January	45543	46342	60009	59839	73562	22.9
February	31775	36089	39430	45712	60030	31.3
March	34933	47695	52276	51139	66122	29.3
April	21107	23810	24677	29581	38879	31.4
May	9674	13509	17374	8351	7734	-7.4
June	8293	7082	10560	7113	8626	21.3
July	8322	7621	11804	11364	13264	16.7
August	10509	11816	11954	7070	11527	63.0
September	7279	7642	11349	6736	10229	51.9
October	16182	22602	16552	12303	20280	64.8
November	44369	48971	37072	41333	49443	19.6
December	38231	48372	47850	72356	63392	-12.4
<b>TOTAL</b>	<b>276217</b>	<b>321551</b>	<b>340907</b>	<b>352897</b>	<b>423088</b>	<b>19.9</b>

Number of Calls	200	205	255	219	234
-----------------	-----	-----	-----	-----	-----

## TOURIST ACCOMMODATION (Rooms)

Type of Accommodation	2005	2006	2007	2008	2009
Hotels	n.a	n.a	n.a	n.a	n.a
Apartments	n.a	n.a	n.a	n.a	n.a
Villas/Cottages	n.a	n.a	n.a	n.a	n.a
Guest Houses	n.a	n.a	n.a	n.a	n.a
Other	n.a	n.a	n.a	n.a	n.a
<b>TOTAL</b>	<b>3647</b>	<b>4366</b>	<b>4599</b>	<b>4841</b>	<b>n.a</b>

Source: Curacao Tourism Development Bureau



## DOMINICA

### Visitor Arrival Summary

Dominica hosted 74.9 thousand tourists in 2009, a decrease of 5.8 percent, with 69.1 percent of these coming in the Summer. Overall, arrivals during this season contracted by 7.8 percent, whereas during the Winter season, arrivals shrank by only 1.0 percent.

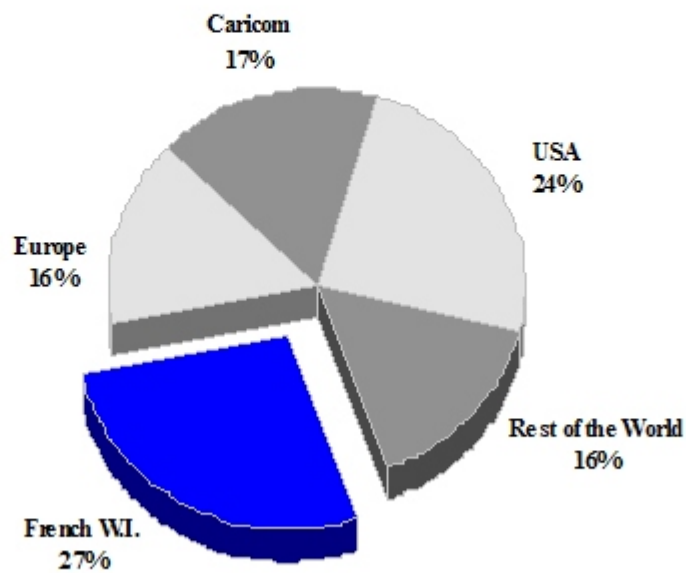
- ◆ Arrivals from the French West Indies continued to perform creditably, growing by 7.8 percent, totaling 20.5 thousand, or 27.3 percent of total tourists. Arrivals from the USA (24.3 percent share) continued to slide by 11.2 percent; the French West Indies (23.9 percent share) was up by 8.0 percent; Other Countries (12.0 percent share) was 7.7 percent less; and the OECS (11.7 of the total) was down by 3.4 percent. Among the markets performing better in 2009, France outstripped its 2008 total by 23.3 percent, Other Europe inched upward by 2.0 percent. Canada and the United Kingdom fell way below their 2008 performances by 21.3 percent and 39.6 percent respectively.
- ◆ Dominica hosted some 530.3 thousand Cruise Passengers in 2009, which was a significant 37.2 percent increase. September (674.4 percent), October (146.9 percent) and May (100.3 percent) had phenomenal growth rates in 2009. Only December registered an insignificant 1.7 percent decline. Overall, the Winter and Summer months improved on their 2009 performances by 37.1 and 37.3 percent respectively.

### TOURISM HIGHLIGHTS FOR 2009

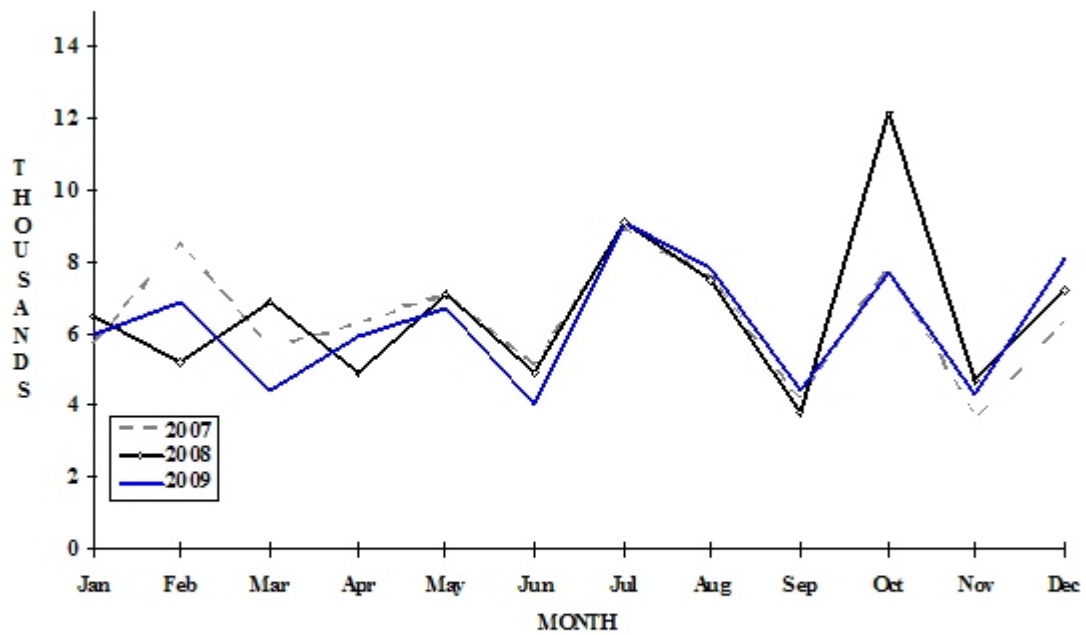
VISITOR ARRIVALS			
Tourist Arrivals ➔	74,923	Cruise Passengers	530,333
➔ <i>Summer</i>	69.1%	➔ <i>Summer</i>	50.6%
➔ <i>Winter</i>	30.9%	➔ <i>Winter</i>	49.4%
		Cruise Ship Calls	273
VISITOR PROFILE			
Average Length of Stay ( <i>nights</i> ) <sup>1</sup>	14.4	<b>Tourist Arrivals by Place of Stay<sup>1</sup></b>	
<b>Tourist Arrivals by Purpose of Visit<sup>1</sup></b>		➔ <i>Hotels</i>	22.0%
➔ <i>Holiday</i>	70.1%	➔ <i>Guest Houses/Apartments</i>	9.5%
➔ <i>Business</i>	10.8%	➔ <i>Private</i>	51.7%
➔ <i>Other</i>	19.1%	➔ <i>Other</i>	16.8%
TOURISM AND OTHER RELATED ECONOMIC STATISTICS			
Total Expenditure ( <i>US\$ millions</i> ) <sup>1</sup>	\$71.6	GDP at Factor Cost ( <i>US\$ millions</i> ) <sup>1</sup>	\$285.5
Tourism Budget ( <i>US\$ thousands</i> ) <sup>b,f</sup>	\$3,045	Consumer Price Index (% ch. 2009/08)	1.5%
Hotel and Restaurant contribution to GDP <sup>1</sup>	2.9%		
ACCOMMODATION STATISTICS		SOCIO-ECONOMIC STATISTICS	
Rooms <sup>1</sup>	920	Land Area ( <i>square Kilometres</i> )	750
		Population ( <i>thousand mid year 2008</i> )	71.6

# DOMINICA

## TOURIST ARRIVALS BY MAIN MARKETS 2009



## MONTHLY TOURIST ARRIVALS



## TOURIST ARRIVALS BY COUNTRY OF RESIDENCE

Country of Residence						% Share	
	2005	2006	2007	2008	2009	2009	
U.S.A	18492	22011	21477	20492	18193	24.3	
Canada	1977	2552	2670	3328	2618	3.5	
United Kingdom	6117	6503	6211	7212	4354	5.8	
France	1853	2239	2403	3624	4469	6.0	
Other Europe	2288	2561	2129	2713	2768	3.7	
OECS	10767	10899	9621	9076	8768	11.7	
Other CARICOM	4843	6243	4623	4349	4283	5.7	
French W.I	18517	19475	17575	18975	20461	27.3	
Other Countries	14403	11558	9806	9765	9009	12.0	
<b>TOTAL</b>	<b>79257</b>	<b>84041</b>	<b>76515</b>	<b>79534</b>	<b>74923</b>	<b>100.0</b>	

## MONTHLY TOURISTS ARRIVALS

Month						% Change	
	2005	2006	2007	2008	2009	2009/08	
January	6208	5431	5677	6491	6008	-7.4	
February	7087	8302	8509	5157	6853	32.9	
March	6938	5456	5565	6877	4414	-35.8	
April	5903	7778	6246	4859	5876	20.9	
May	6500	6484	7082	7077	6640	-6.2	
June	5353	5400	5097	4827	3946	-18.3	
July	8635	9935	8957	9062	9028	-0.4	
August	7466	7899	7538	7422	7715	3.9	
September	4029	4387	4125	3787	4358	15.1	
October	8605	9451	7800	12124	7703	-36.5	
November	4523	4838	3615	4693	4260	-9.2	
December	8010	8680	6304	7158	8122	13.5	
<b>TOTAL</b>	<b>79257</b>	<b>84041</b>	<b>76515</b>	<b>79534</b>	<b>74923</b>	<b>-5.8</b>	

## DOMINICA

## CRUISE PASSENGER ARRIVALS

Month						% Change	
	2005	2006	2007	2008	2009	2009/08	
January	40359	56038	53377	55070	67022	21.7	
February	30832	52536	44974	55781	77816	39.5	
March	37146	42020	42892	49547	71587	44.5	
April	28520	32924	32434	30471	45340	48.8	
May	16709	15375	13539	11984	24009	100.3	
June	12501	13201	12712	12902	23175	79.6	
July	12710	13410	16238	15817	23968	51.5	
August	12341	15979	9527	12507	16491	31.9	
September	3134	12361	12164	2849	22062	674.4	
October	20583	27337	24526	10496	25917	146.9	
November	36351	50291	40932	43704	49149	12.5	
December	50325	48171	51200	85286	83797	-1.7	
<b>TOTAL</b>	<b>301511</b>	<b>379643</b>	<b>354515</b>	<b>386414</b>	<b>530333</b>	<b>37.2</b>	

<b>Number of Calls</b>	234	314	252	213	273
------------------------	-----	-----	-----	-----	-----

## TOTAL VISITOR ARRIVALS BY CATEGORY

Category	2005	2006	2007	2008	2009
Tourists	79257	84041	76515	79534	74923
Cruise Passengers	301511	379643	354515	386414	530333
Other same-day visitors	650	939	901	965	780
<b>TOTAL</b>	<b>381418</b>	<b>464623</b>	<b>431931</b>	<b>466913</b>	<b>606036</b>

## TOURIST ACCOMMODATION (Rooms)

Rooms	2004	2005	2006	2007	2008
<b>TOTAL</b>	791	787	818	901	920

Sources: Division of Tourism, National Development Corporation, Department of Statistics- Dominica